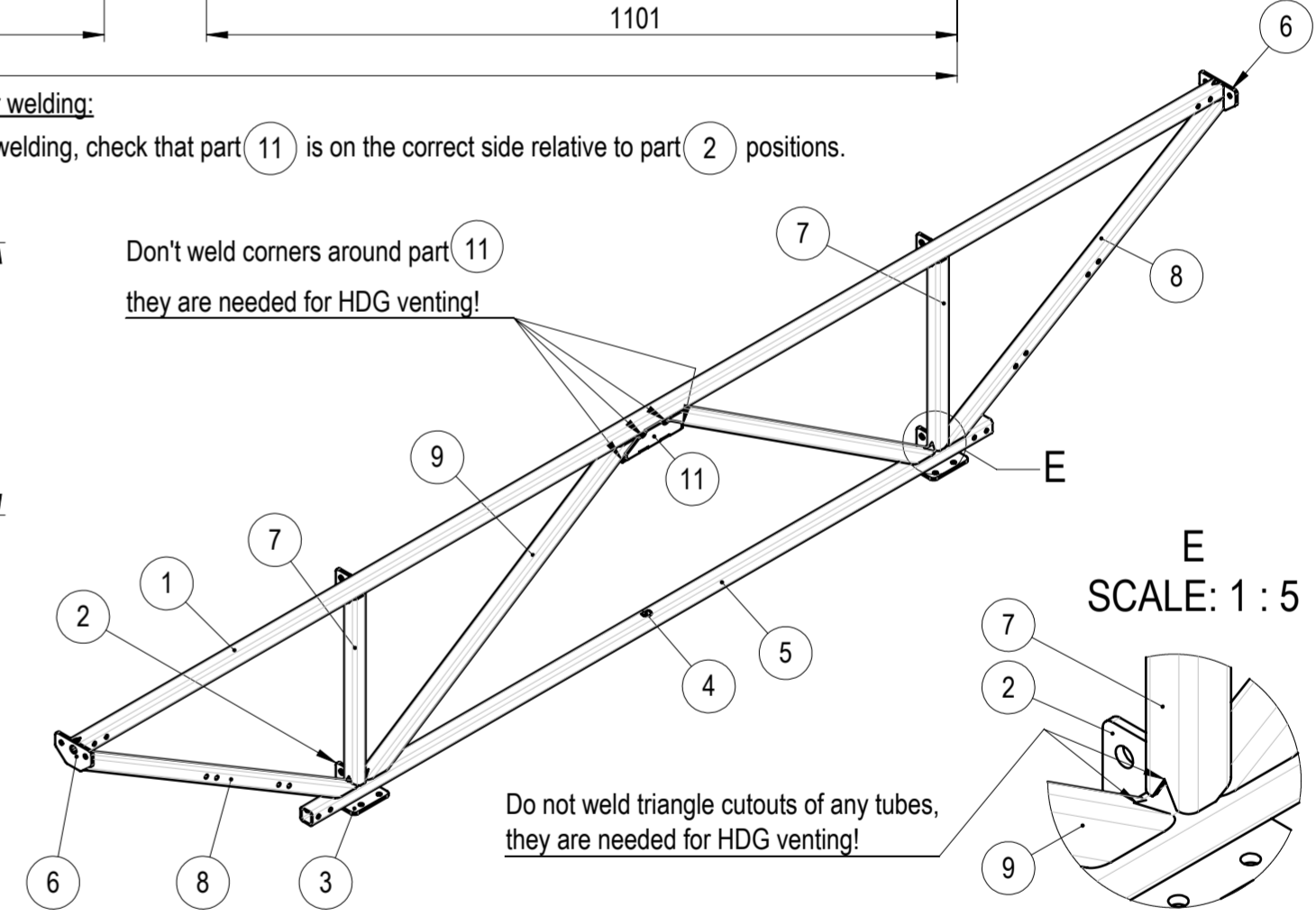
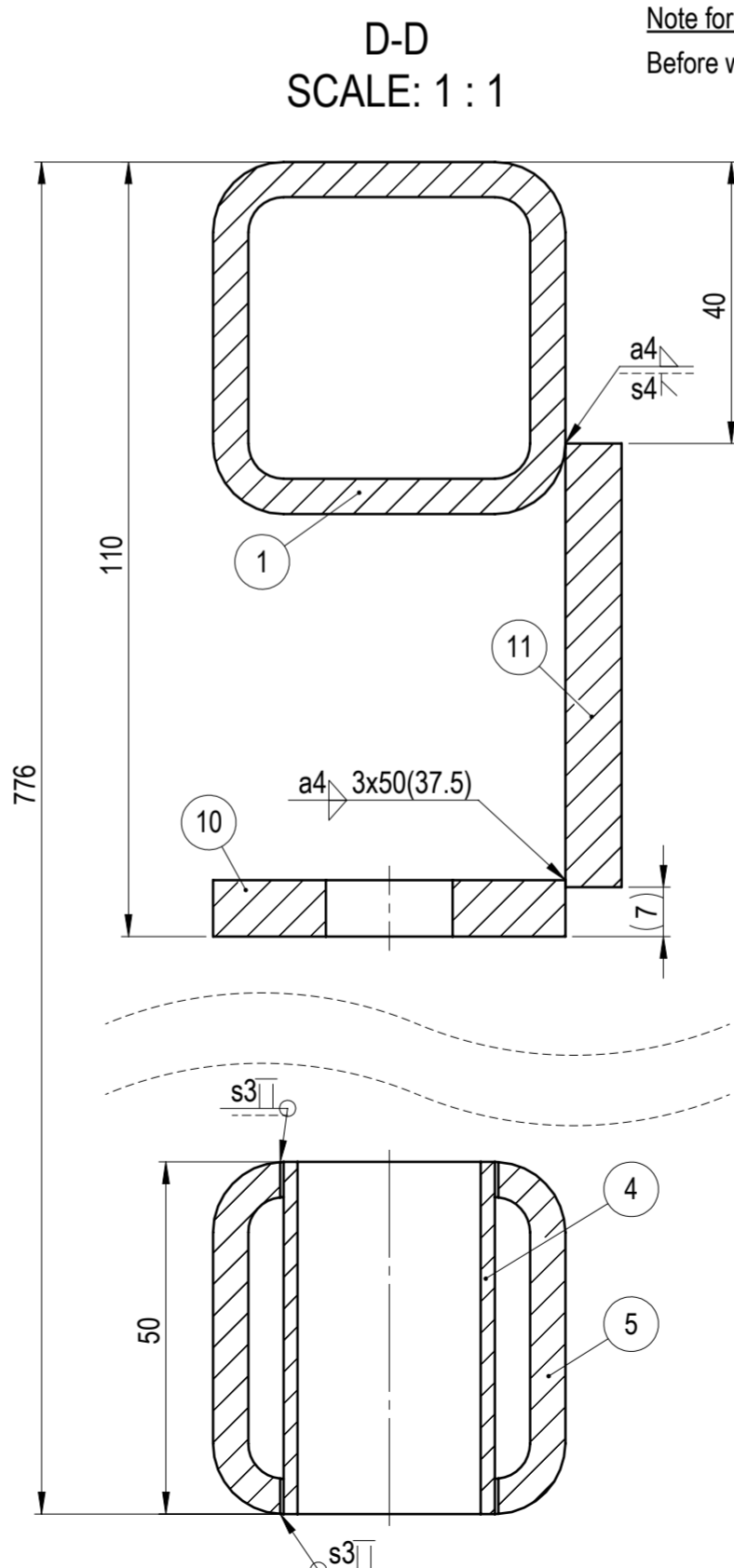
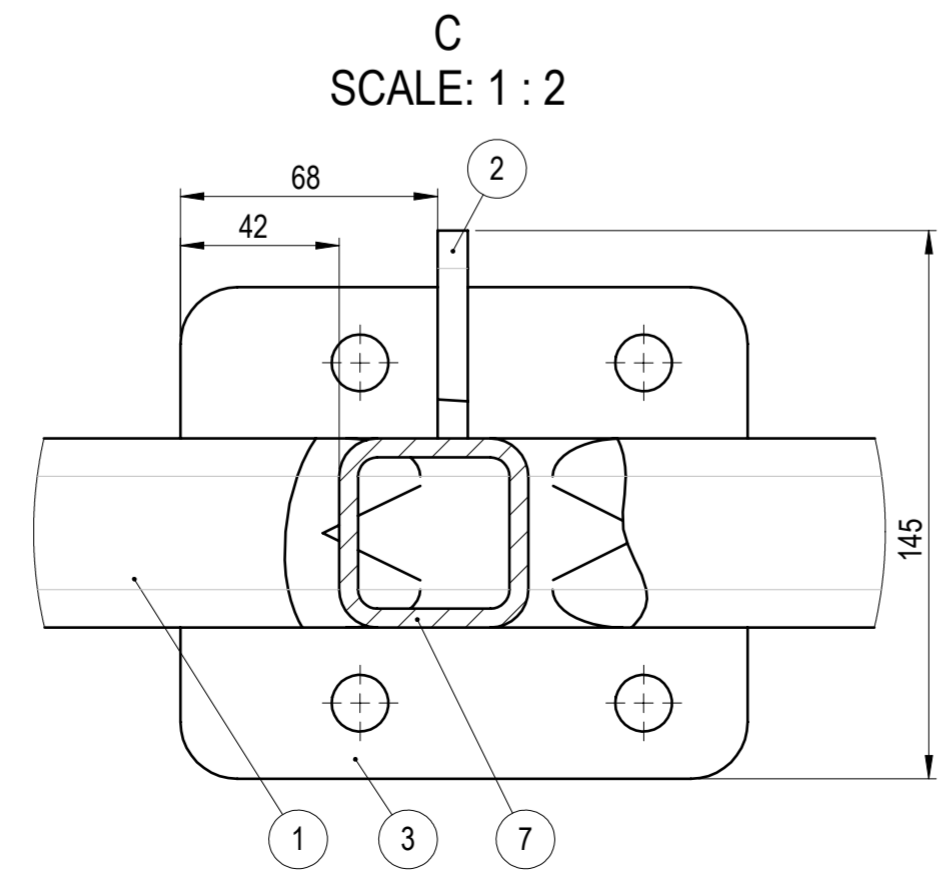
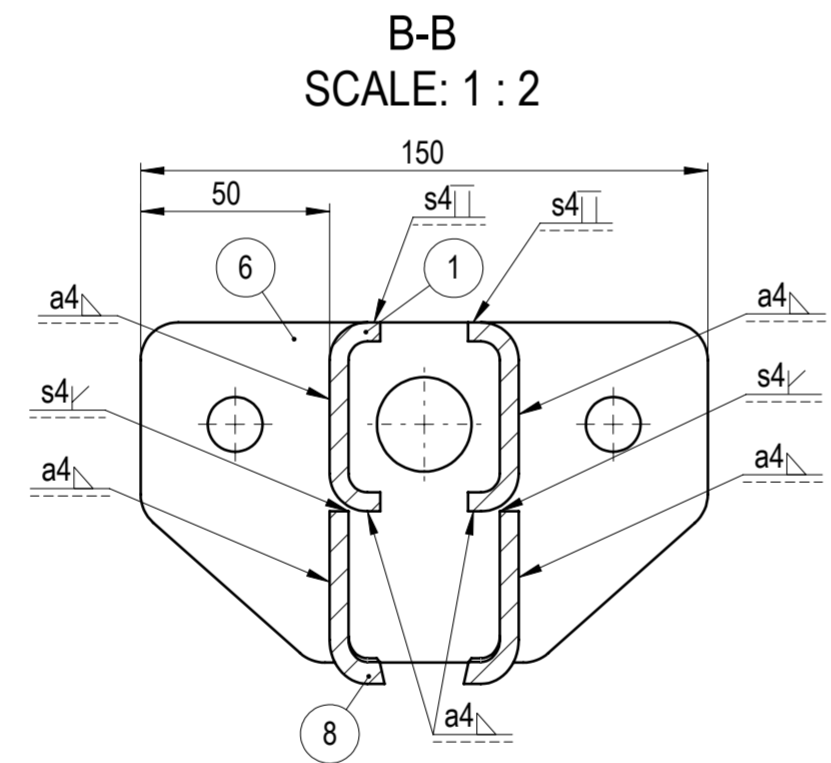
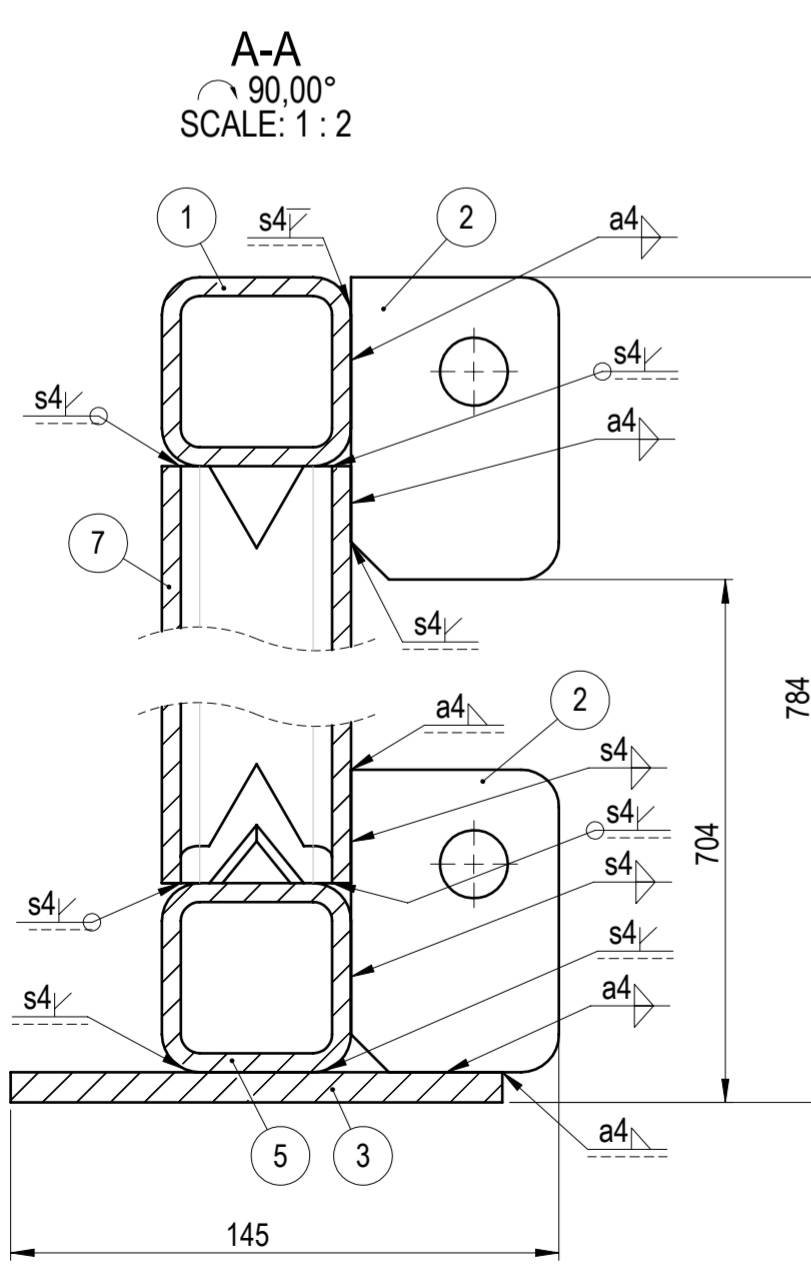


Note for welding:  
Before welding, check that part 11 is on the correct side relative to part 2 positions.



NO.	PART NO	DESCRIPTION	MATERIAL	PROCESSING	REVISION	WEIGHT	QTY
1	105-09221-01	Top tube	S355J2	CND		30.81	1
2	105-09221-05	Tie link flange	S355J2	LC		0.25	4
3	105-09221-07	Bottom flange hanger frame	S355J2	LC		1.16	2
4	105-09221-11	Sleeve	S235JR	CND		0.07	1
5	105-09222-02	Bottom tube 2	S355J2	CND		18.29	1
6	105-09223-07	Side flange 2	S355J2	LC		0.68	2
7	105-09225-01	Vertical tube 5	S355J2	CND		4.34	2
8	105-09225-02	Outside diagonal tube 5	S355J2	CND		8.28	2
9	105-09225-03	Inside diagonal tube 5	S355J2	CND		8.05	2
10	105-09225-04	Middle bracket 5	S355J2	LC		0.76	1
11	105-09225-05	Back plate 5	S355J2	LC		0.67	1

**WEMPS**  
ENGINEERING SERVICES

MATERIAL: SURFACE PROTECTION: HDG EN ISO 1461  
WEIGHT: 96.624 Kg  
MACHINING: ISO 2768 mK  
DEBURR AND BREAK SHARP EDGES: DO NOT SCALE DRAWING  
THERMAL CUTTING: ISO 9013 221  
WELDING: ISO 13920 BF  
REVISION: 02.06.2025  
DATE: 02.06.2025  
SCALE: 1:10  
FORMAT: A2

105-09225-00  
Hanging frame weldment 5

Designed by: D. Dislers  
Drawn by: D. Dislers  
Technical ref:

SHEET 1/1